

Product Datasheet

STD-TCH-100KS/11K Temperature Controlled Emergency Safety Shower



Intended for indoor and outdoor use, this heated and insulated emergency safety shower ensures delivery of tepid water for the ANSI recommended minimum period of 15 minutes. Incorporating a heated tank, overhead shower and front mounted eye/face wash with protective lid as standard. The unit can also be used to supply heated water to other emergency safety showers via a second outlet. Suitable for use in hazardous areas.

Specifications

MATERIALS OF CONSTRUCTION

PIPEWORK & FITTINGS (K)	Galvanised mild steel with 150lb medium wall tubulars and fittings
PIPEWORK & FITTINGS (KS)	316L stainless steel with 150lb medium wall tubulars and fittings
FRAME (K)	Galvanised mild steel
FRAME (KS)	Stainless steel
OPERATING VALVES	316L stainless steel
SHOWER SPRAY OUTLET	Moulded nylon 6
EYE/FACEWASH FILTER STRAINER	316L stainless steel
INSULATION & OUTER CASING	Polyurethane foam insulation with a medium density polyethylene impact resistant outer casing on the pipework, GRP on outer frame
STANDARD FINISH	White with green/white safety stripes (alternative colours available)

SERVICES

WATER INLET	1 1/4" Male BSP
DESIGN OPERATING PRESSURE	2.2 to 6 BAR G (32 to 87 PSI) (higher supply pressures accommodated with the incorporation of the optional pressure reducing valve)
WATER TEMPERATURE SET POINT	-20° C to 30° C (-4° F to 86° F)
HEATING TYPE	Trace tape heated and pre-insulated pipework, immersion heated tank
HEATING LOAD	3 kW
ELECTRICAL EQUIPMENT - Non-hazardous	Suitable for use in areas classified as non-hazardous
ELECTRICAL EQUIPMENT - Hazardous	ATEX Zone 1 & 2 Gas Groups IIA and IIB, Temp Class T3 (IIC available)
ELECTRIC SUPPLY	230V Single Phase, 50/60Hz or 110V available
TEST PRESSURE	10 BAR G (145 PSI)
MINIMUM FLOW AT OPERATING PRESSURE	Shower - 76 litres/minute (20 US gallons). Eye/Face wash - 12 litres/minute (3 US gallons)

ACTIVATION/OPERATION

SHOWER OPERATION	Pull handle (Optional treadle foot control for hands free operation)
EYEBATH/FACE WASH OPERATION	Lift lid up (Optional treadle foot control for hands free operation)

WEIGHTS and DIMENSIONS

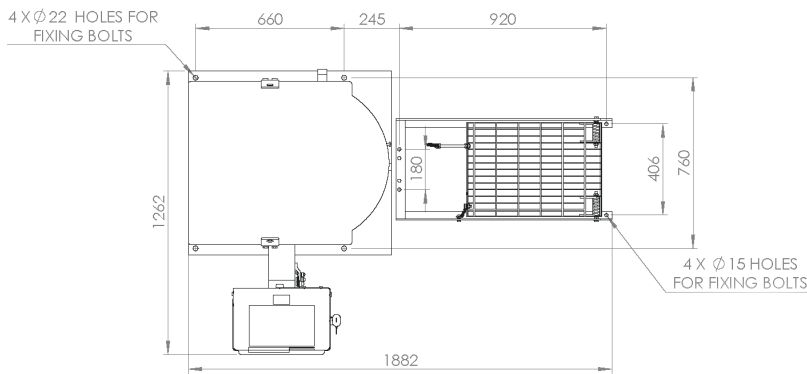
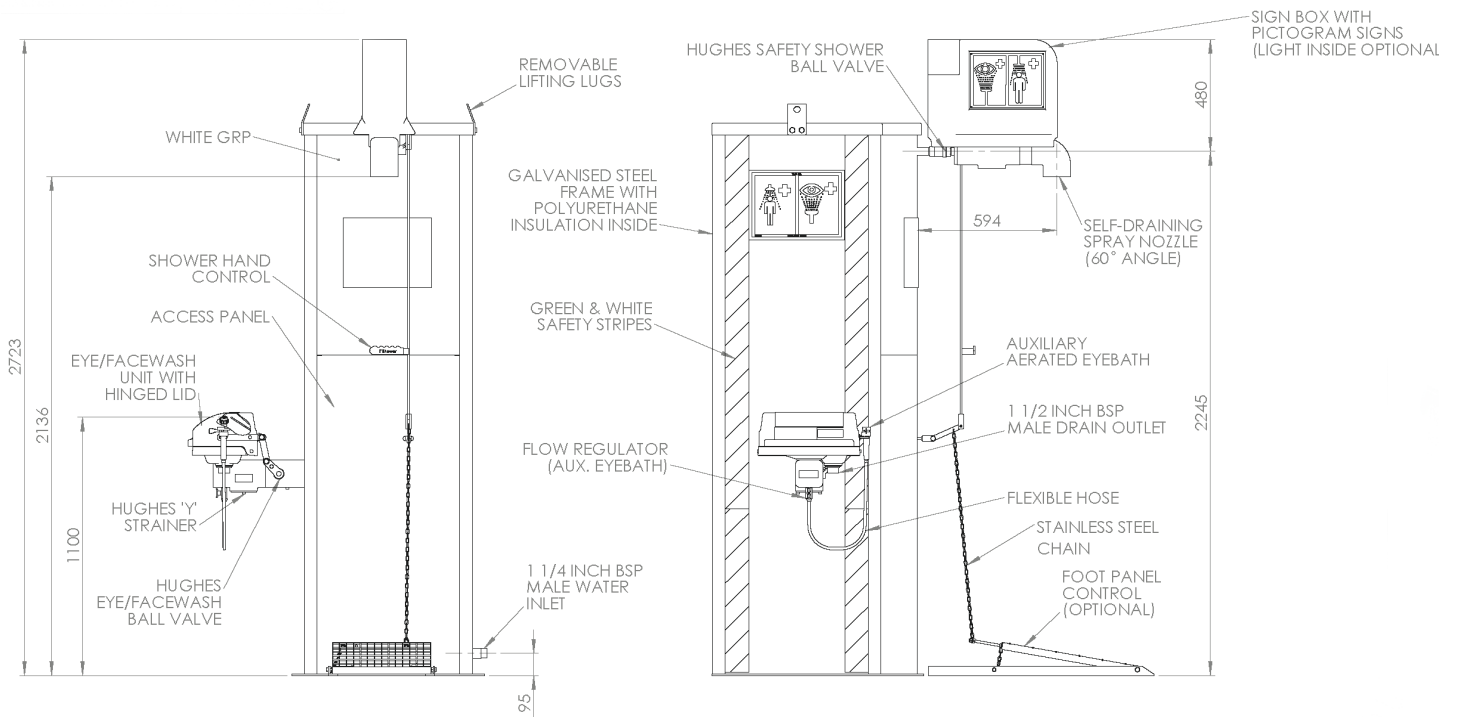
DIMENSIONS (WxDxH)	1262mm (49.7in) x 1532mm (60.3in) x 2729mm (107.4in)
WEIGHT	230kg (507lb)

View our Guide to the ANSI/ISEA Z358.1-2014 International Standard for Emergency Eyewash and Shower Equipment at www.hughes-safety.com



STD-TCH-100KS/11K

Temperature Controlled Emergency Safety Shower



HUGHES



HUGHES-SAFETY.COM

a Justrite® Group Company

Hughes Safety Showers Ltd, Whitefield Road, Bredbury, Stockport SK6 2SS UK.

Email: info@hughes-safety.com

Tel: +44 (0)161 430 6618

Registered No. 0939240. VAT Registration No. 918 5005 32. Hughes Safety Showers Ltd is a Justrite Group Company.

V1.3