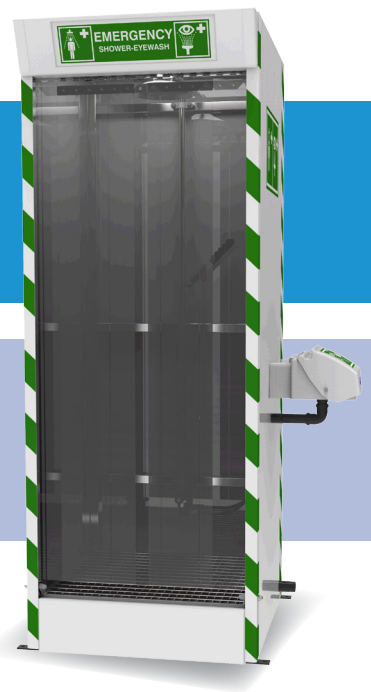


# Product Datasheet

## STD-SD-32K/45G Emergency Cubicle Shower

Unheated emergency cubicle shower with closed ABS bowl eye/face wash unit. Incorporating an integral drain sump to reduce the risk of surplus contaminated water outside of the cubicle area. Ideal in locations where space is at a premium or where the emergency safety shower needs to be enclosed.



### Specifications

#### MATERIALS OF CONSTRUCTION

PIPEWORK AND FITTINGS (K)	Stainless steel
OPERATING VALVES	316L stainless steel
SHOWER SPRAY OUTLETS	ABS shower rose
STANDARD FINISH	GRP and stainless steel
EYE WASH	Acrylic Capped ABS

#### SERVICES

WATER INLET	1" Male BSP
DESIGN OPERATING PRESSURE	2 to 6 BAR G (29 to 87 PSI) (higher supply pressures accommodated with the incorporation of the optional pressure reducing valve)
TEST PRESSURE	10.3 BAR G (149 PSI)
MINIMUM FLOW AT OPERATING PRESSURE	Shower: 76 litres/minute minimum (20 US Gallons) Eye/face wash: 12 litres/minute minimum (3 US Gallons)

#### ENVIRONMENTAL OPERATING TEMPERATURE

MINIMUM AMBIENT OPERATING TEMPERATURE	5° C (41° F) (-0° C (32° F) if valve is insulated)
MAXIMUM AMBIENT OPERATING TEMPERATURE	35° C (95° F)

#### OPERATIONAL

SHOWER/BODY SPRAY OPERATION	Hand activated (Optional foot panel for hands free operation)
-----------------------------	---

#### WEIGHTS and DIMENSIONS

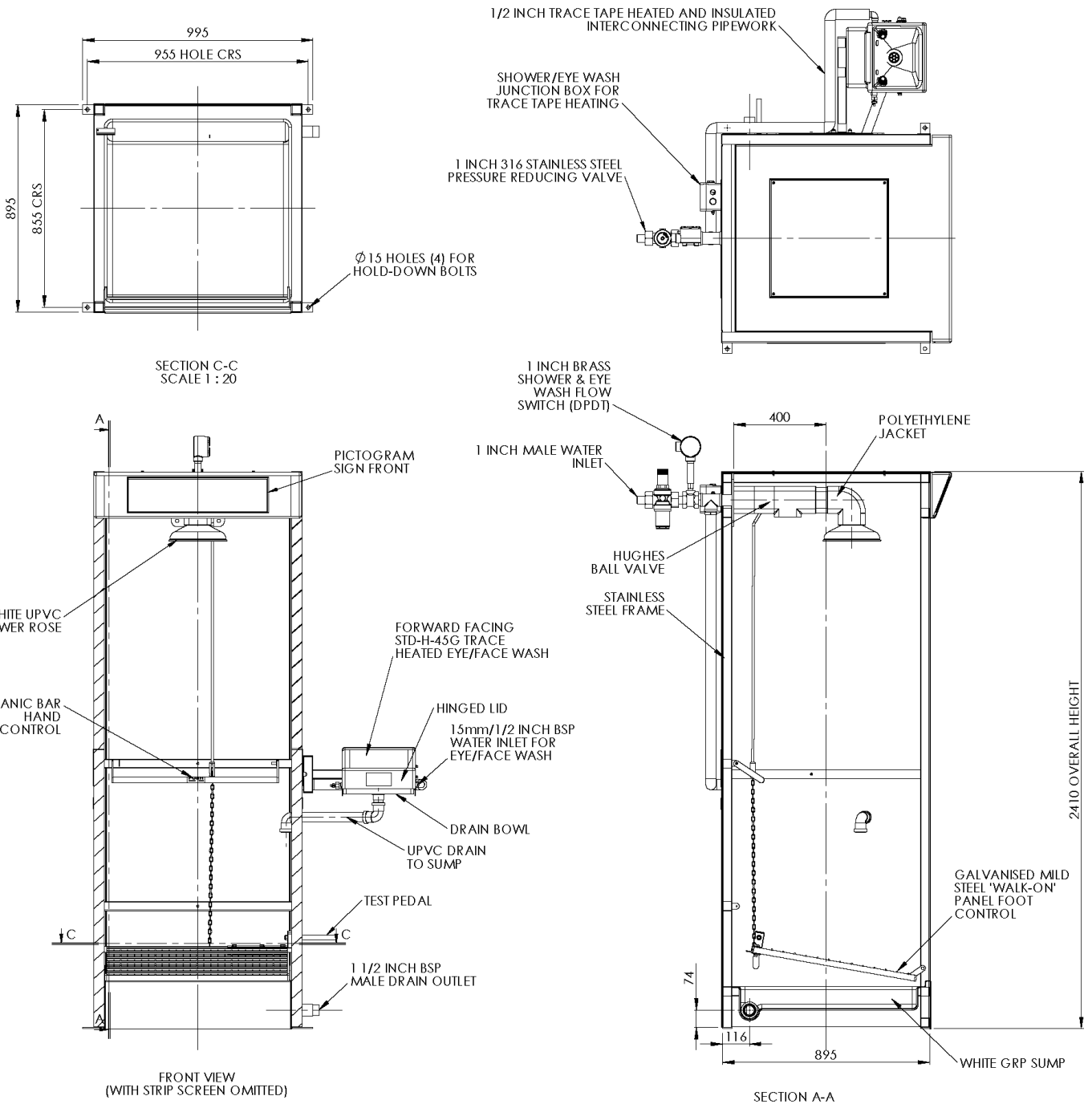
DIMENSIONS - STANDARD ORIENTATION (WxDxH)	1320mm (52in) x 1047mm (41.2in) x 2409mm (94.8in)
WEIGHT (NO OPTIONS)	145kg (320lb)

View our Guide to the ANSI/ISEA Z358.1-2014 International Standard for Emergency Eyewash and Shower Equipment at [www.hughes-safety.com](http://www.hughes-safety.com)



**STD-SD-32K/45G**

*Emergency Cubicle Shower*



**HUGHES**



**HUGHES-SAFETY.COM**

a Justrite® Group Company

Hughes Safety Showers Ltd, Whitefield Road, Bredbury, Stockport SK6 2SS UK.

Email: [info@hughes-safety.com](mailto:info@hughes-safety.com)

Tel: +44 (0)161 430 6618

Registered No. 0939240. VAT Registration No. 918 5005 32. Hughes Safety Showers Ltd is a Justrite Group Company.

V1.1