



Polar Tank Shower
EXP-MH-14K/1200-Polar
 EXP-MH-14KS/1200



Polar Tank Shower Range

Hughes Safety Showers manufacture a range of heavy duty Emergency Polar Tank Showers for use when tepid water is required or a constant supply cannot be guaranteed in sub-zero conditions

The units are essential where there is a problem with insufficient water pressure or inadequate flow rate. This Emergency Polarised Tank Shower incorporating a 1200 litre tank to deliver a guaranteed flow of warm water for 15 minutes, even when the mains supply has been disrupted.

Specification

Incorporating a 1200 litre tank to deliver a guaranteed flow of warm water for 15 minutes, even when the mains supply has been disrupted.

An integral immersion heater, controlled by the dual safety thermostat, maintains the water in the insulated tank at a constant temperature.

In addition, the Tank Shower is fitted with a double skinned GRP insulated cubicle and double-swing push open doors to give unimpeded access and provide protection from the elements while showering. Windows in the doors enable the casualty to be monitored whilst using the emergency safety equipment in case assistance is required.

Available with either Galvanised Mild Steel or Stainless Steel frames which are designed and built to be Earthquake-proof and conform to the California Building Code 1998 Chapter 16, Division 1.

Can also be provided with an optional space heater for air temperature control inside the booth. The Polar cubicle is finished with yellow, white or green GRP outer casing, with self-adhesive pictogram 'Shower' and/or 'Eye wash' signs to ISO 3864-1 and green and white safety stripes.



**GENERAL USE
 POLAR TANK
 SHOWERS**

Polar Tank Showers are available in four sizes. The 750 litre model will deliver tepid water for 15 minutes when connected to the mains supply, as recommended by the ANSI standard. The 1200, 1600 and 2000 litre models will meet the standard even without an external supply connected.



Polar Tank Shower
EXP-MH-14K/1200-Polar
 EXP-MH-14KS/1200

TECHNICAL DETAILS

Technical Data

INLET CONNECTION SIZE & TYPE	3/4" BSP Female
SHOWER OPERATION	Panic Bar (Foot Panel Control optional)
FACEWASH OPERATION	Lift Lid (Foot Treadle Control optional)
SUPPLY PRESSURE	0.5 Bar (minimum) - 10 Bar (maximum)
FLOW AT OPERATING PRESSURE	Showers - 76 Litres/Minimum Eye/Facewash - 12 Litres/Minimum
ELECTRICAL EQUIPMENT - Non-Hazardous	Suitable for use in areas classified as Non-Hazardous
ELECTRICAL EQUIPMENT - Hazardous	ATEX Zone 1 & 2 Gas Groups IIA & IIB, Temp Class T3
ELECTRICAL SUPPLY	240V, Single Phase, 50Hz (110V Optional)
IMMERSION HEATER (Not-J-)	3000 Watts - 240 Volts or 1700 Watts - 110 Volts

Materials list for Hughes Emergency 1200 Litre Tank Shower - including options

SHOWER ROSE	GRP Housing Stainless Steel Rose - 75.7 litres/min (ANSI compliant)
PIPING & VALVE MATERIALS	Showers - uPVC Piping and uPVC Valve for Shower Eye wash - uPVC Piping and Stainless Steel Valve for Eye wash
CONTROL VALVE - SHOWER	uPVC 1 1/2" BSP Ball Valve. BS4346 Part 1.
CONTROL VALVE - EYE/FACEWASH	1/2" Hughes Stainless Steel Full Flow Ball Valve with Stainless Steel Ball
EYE/FACEWASH STRAINER	1/2" Hughes Stainless Steel 'Y' Strainer with 100 mesh Monel Filter Basket
OVERFLOW	1" BSP uPVC
BALLCOCK VALVE	2 x 1/2" BSP Brass Ballcock Valve to BS1212/PE2 with 5" Float
VALVE LEVERS	Red Reinforced Nylon & Stainless Steel
SHOWER CONTROL PANIC BAR	Stainless Steel Powder Coated Red
WATER TANK	1200 Litre Capacity Heavy Density Polyethylene HDPE
TANK SURROUND AND LID	Heavy-Duty GRP in White (Green or Yellow available)
POLAR DOORS	GRP with Viewing Window
DOOR HINGES	Powder Coated Steel (Stainless Steel available)
SHOWER FRAME AND LEGS (K)	Mild steel hollow section galvanised to BS729
SHOWER FRAME AND LEGS (KS)	Stainless Steel type 304L with semi-polished finish
INSULATION	40mm Thick Foil Backed Polyurethane
PULL RODS FOR VALVE OPERATION	Stainless Steel
PANEL TYPE FOOT CONTROL	Galvanised or Stainless Steel (Optional)
ALL FASTENERS AND FIXINGS	Stainless Steel A2

Environmental Temperature

MINIMUM AMBIENT OPERATING TEMP	EXP-MH: -35°C (-31°F)
MAXIMUM AMBIENT OPERATING TEMP	35°C (95°F)

Weights

1200Ltr - NO OPTIONS	500Kg	POINTER LEVEL INDICATOR	0.6Kg
GRP PANELLING TO 3 SIDES	86Kg	TEMPERATURE INDICATOR 4" DIAL	0.6Kg
GRP POLARISED DOORS	42Kg	IMMERSION HEATER - FLP	6.5Kg
SUMP FRAME & FOOT GRATING	56.6Kg	IMMERSION HEATER - NON FLP	2.2Kg
SHOWER PANEL FOOT CONTROL	32Kg	LIGHT - FLP	1.8Kg
EYE WASH TREADLE FOOT CONTROL	1.1Kg	LIGHT - NON FLP	1Kg
EYE/FACEWASH	5Kg		

*Unless stated all references to Stainless Steel are 304L.
 **316L is available upon request.





Polar Tank Shower
EXP-MH-14K/1200-Polar
 EXP-MH-14KS/1200

TECHNICAL DATA

Options

	Optional Fittings	Eye/Facewash Fountain	Hand Held Eye, Face & Body Shower Unit	Tank Shower Light for Sign Box	GFP Panelling	Strip Screens	Drain Sump and Grating	Panel Foot Control	Treadle Foot Control	Shower Test Control	Syphon Test Handle	Temperature Gauge	Painter Level Indicator	Low Level Switch	Shower Proximity Switch	Eye/Facewash Proximity Switch	Eye, Face & Body Shower Proximity Switch	Audible/Visual Alarm	Audible Alarm	Visual Alarm	Brass Pressure Reducing Valve	Inlet Flange	Space Heater	Hydrocleanz
EXP-MH-14K/1200	●	●	●	●	●	●	●	●	●	●	●	●	●	●	●	●	●	●	●	●	●	●	●	●
EXP-MH-14KS/1200	●	●	●	●	●	●	●	●	●	●	●	●	●	●	●	●	●	●	●	●	●	●	●	●



Eye/Facewash Fountain



Hand Held Eye, Face & Body Shower Unit



Drain Sump and Grating



Panel Foot Control



Syphon Dump Valve



Audible/Visual Alarm



Pressure Reducing Valve

International Standards Guidance



- ALLOCATE A LOCATION REFERENCE FOR EASE OF IDENTIFICATION
- ALL UNITS TO BE ACTIVATED WEEKLY - ANSI Z358.1 2009
- SAFETY SHOWER/EYE WASH MUST BE LOCATED WITHIN 10 SECONDS OR 15 METRES OF A POTENTIAL HAZARD - ANSI Z358.1 2009
- THE UNIT MUST BE LOCATED ON THE SAME LEVEL AS THE HAZARD AND THE PATH OF TRAVEL & LOCAL AREA SHOULD BE FREE FROM OBSTRUCTIONS - ANSI Z358.1 2009
- THE UNIT SHOULD BE WELL LIT AND IDENTIFIED WITH HIGHLY VISIBLE SIGNAGE TO ISO 3864.1 - ANSI Z358.1 2009
- FLUSH FOR SUFFICIENT DURATION TO PURGE THE SUPPLY PIPE WITH FRESH WATER
- REPLACE WORN OR ILLEGIBLE SAFETY SIGNS AND STICKERS
- SIGN & DATE SERVICE TAG WHEN SERVICE COMPLETED

Hughes Safety Showers Continuous Improvement Program

EndoStat



As part of the Hughes Safety Showers continuous improvement program we have introduced new measures in both the manufacture and servicing of our Safety Showers to control the growth and spread of bacteria. All Tanks are coated in EndoStat as part of our hygiene and infection control protocols. When EndoStat is applied to the surface it forms a Self-Sanitizing Treatment (SST) to protect against bacteria, virus and fungus, Treated surfaces do not require re-application, however they should be regularly cleaned using our approved protocols.

Benefits and Standards

- Non toxic
- Odorless
- Non-leaching, can be used on food preparation surfaces
- Meets BS EN ISO Standards
- Manufactured under EC Directives
- Strong chemical bonding process



HUGHES

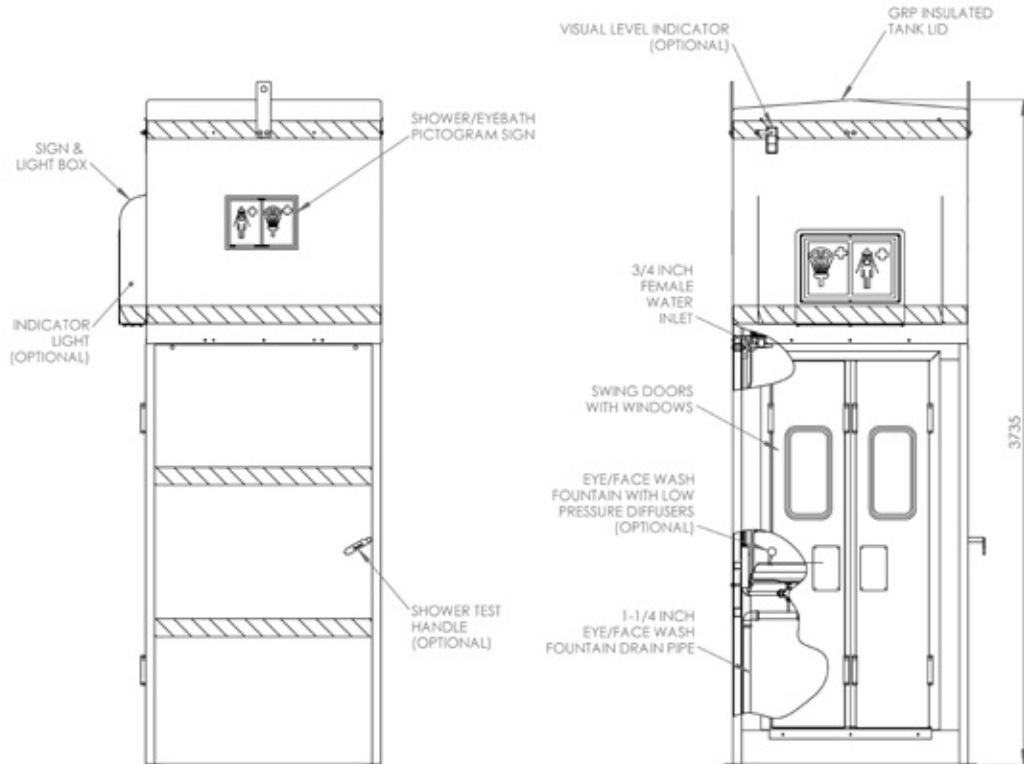
HUGHES-SAFETY-SHOWERS.CO.UK





Polar Tank Shower
EXP-MH-14K/1200-Polar
 EXP-MH-14KS/1200

HUGHES G.A. DRAWING



HUGHES SAFETY SHOWERS LTD
 Whitefield Road, Bredbury, Stockport, Cheshire, SK6 2SS England, UK.
T: +44 (0)161 430 6618
 E: info@hughes-safety-showers.co.uk F: +44 (0)161 430 7928

www.hughes-safety-showers.co.uk

Registered No. 0939240. VAT Registration No. 918 5005 32. Hughes Safety Showers Ltd is a wholly owned subsidiary of the JD Hughes Group PLC.

