



Outdoor Heated Emergency Safety Showers
EXP-EH-5G/34G
 EXP-AH-5G/34G, EXP-EJ-5G/34G



Outdoor Heated Emergency Safety Shower

Hughes Safety Showers manufacture an Emergency Safety Shower with Eye/Facewash diffusers, trace tape heated and pre-insulated.

Pipework available in Galvanised Mild Steel or Stainless Steel.

As above but with extra heating
 EXP-AH-5G/34G.

Also available without heating
 EXP-EJ-5G/34G.



EXP-EH-5G/34G

OUTDOOR HEATED EMERGENCY SAFETY SHOWER

- Designed in accordance with ANSI and EU guidelines
- Emergency Safety Shower with Eye/Facewash Diffusers
- Insulated and trace tape heated for frost protection
- Hughes ball valves for greater reliability and longer life
- Available in Galvanised or Stainless Steel
- Choice of optional components including alarms and foot operation

Specification

The shower is operated by a pull handle for ease of use in an emergency. It has a removable self-draining overhead shower nozzle, which is specifically designed for high flow rates in line with ANSI and EU standards. The eye/facewash diffusers are fitted with dust covers, fine mesh strainers and individual flow controllers and are designed to give a gentle flow of aerated water. The water jets lift off the dust covers when operated.

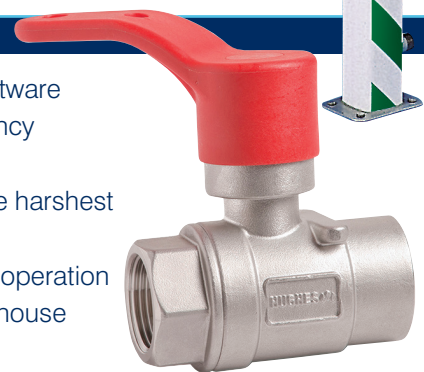
The shower is pre-insulated with polyurethane foam to provide maximum insulation and has a corrosion resistant polyethylene outer jacket.

NB: Supplied in sections for assembly on site for economical shipping costs.

Hughes Ball Valve

- Designed using the latest 3D modelling software
- Specifically developed for Hughes Emergency Shower and Eye wash equipment
- Stainless steel construction to cope with the harshest atmospheres
- Low operating torque designed for ease of operation
- Tested and witnessed by independent test house specialist
- Designed for rough service.

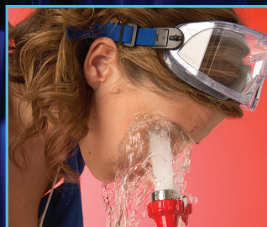
All valves are easily removable for servicing and maintenance.



HUGHES

HUGHES-SAFETY-SHOWERS.CO.UK





Outdoor Heated Emergency Safety Showers
EXP-EH-5G/34G
 EXP-AH-5G/34G, EXP-EJ-5G/34G

Outdoor Heated Emergency Safety Shower

MATERIALS OF CONSTRUCTION

PIPEWORK & FITTINGS (G)	Galvanised Mild Steel with 150lb medium wall tubulars and fittings
PIPEWORK & FITTINGS (GS)	316L Stainless Steel with 150lb medium wall tubulars and fittings
OPERATING VALVES	Hughes - 316 Stainless Steel
SHOWER SPRAY OUTLET	Hughes Shower Nozzle Moulded Nylon 6
INSULATION & OUTER CASING	Polyurethane Foam insulation with a Medium Density Polyethylene impact resistant Outer Casing
STANDARD FINISH	White with Green/White Safety Stripes (alternative colours available)

SERVICES

WATER INLET	1 1/4" Male BSP
DESIGN OPERATING PRESSURE	2.2 to 6 BAR G (Higher supply pressures accommodated with the incorporation of the optional Pressure Reducing Valve)
HEATING TYPE	Trace Tape Heated and Pre-insulated
HEATING LOAD	21 Watts (EH) - 42 Watts (AH)
ELECTRICAL EQUIPMENT - Non Hazardous	Suitable for use in areas classified as Non-Hazardous
ELECTRICAL EQUIPMENT - Hazardous	ATEX Zone 1 & 2 Gas Groups IIA and IIB, Temp Class T3 (IIC available)
ELECTRIC SUPPLY	240V Single Phase, 50/60Hz or 110V available
TEST PRESSURE	10.3 BAR G
MINIMUM FLOW AT OPERATING PRESSURE	Shower: 76 litres/minute minimum Eye/Facewash: 20 litres/minute minimum

ENVIRONMENTAL OPERATING TEMPERATURE

MINIMUM AMBIENT OPERATING TEMP	-10° C (14° F) - EH -20° C (-4° F) - AH 0° C (32° F) - EJ
MAXIMUM AMBIENT OPERATING TEMP	35° C (95° F) - EH, AH & EJ

ACTIVATION/OPERATION

SHOWER OPERATION	Pull Handle
EYE/FACEWASH OPERATION	Push Plate (Treadle Foot control for hands-free - Optional)

WEIGHTS and DIMENSIONS

OVERALL DIMENSIONS	341(W) x 886(D) x 2317mm(H)
WEIGHT - UNPACKED	32Kg

Standards



- ALLOCATE A LOCATION REFERENCE FOR EASE OF IDENTIFICATION
- ALL UNITS TO BE ACTIVATED WEEKLY - ANSI Z358.1 2014
- SAFETY SHOWER/EYE WASH MUST BE LOCATED WITHIN 10 SECONDS OR 15 METRES OF A POTENTIAL HAZARD - ANSI Z358.1 2014
- THE UNIT MUST BE LOCATED ON THE SAME LEVEL AS THE HAZARD AND THE PATH OF TRAVEL & LOCAL AREA SHOULD BE FREE FROM OBSTRUCTIONS - ANSI Z358.1 2014
- THE UNIT SHOULD BE WELL LIT AND IDENTIFIED WITH HIGHLY VISIBLE SIGNAGE TO BS EN ISO 7010 - ANSI Z358.1 2014
- FLUSH FOR SUFFICIENT DURATION TO PURGE THE SUPPLY PIPE WITH FRESH WATER
- REPLACE WORN OR ILLEGIBLE SAFETY SIGNS AND STICKERS
- SIGN & DATE SERVICE TAG WHEN SERVICE COMPLETED

TECHNICAL DETAILS



HUGHES

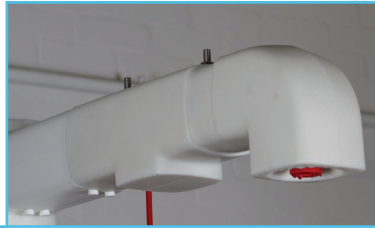


HUGHES-SAFETY-SHOWERS.CO.UK



THE QUEEN'S AWARDS
FOR ENTERPRISE:
INTERNATIONAL TRADE
2012

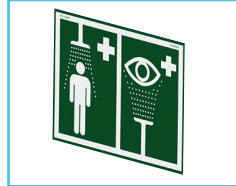




Outdoor Heated Emergency Safety Showers
EXP-EH-5G/34G
 EXP-AH-5G/34G, EXP-EJ-5G/34G

OPTIONS

Options



Shower/Eye wash Sign



Well Glass Light



Sign Box & Lighting



Treadle Foot Control



Shower Proximity Switch



Eye/Facewash Proximity Switch



Flow Switch



Audible/Visual Alarm



Audible Alarm



Visual Alarm



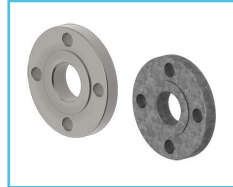
Pressure Reducing Valve



Scald Protection Valve



Freeze Protection Valve



Inlet Flange



Underground Extention Pipe

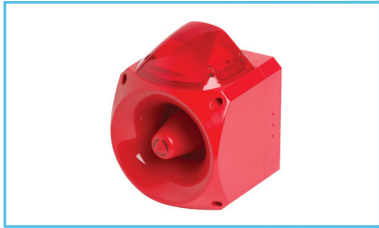


Cubicle



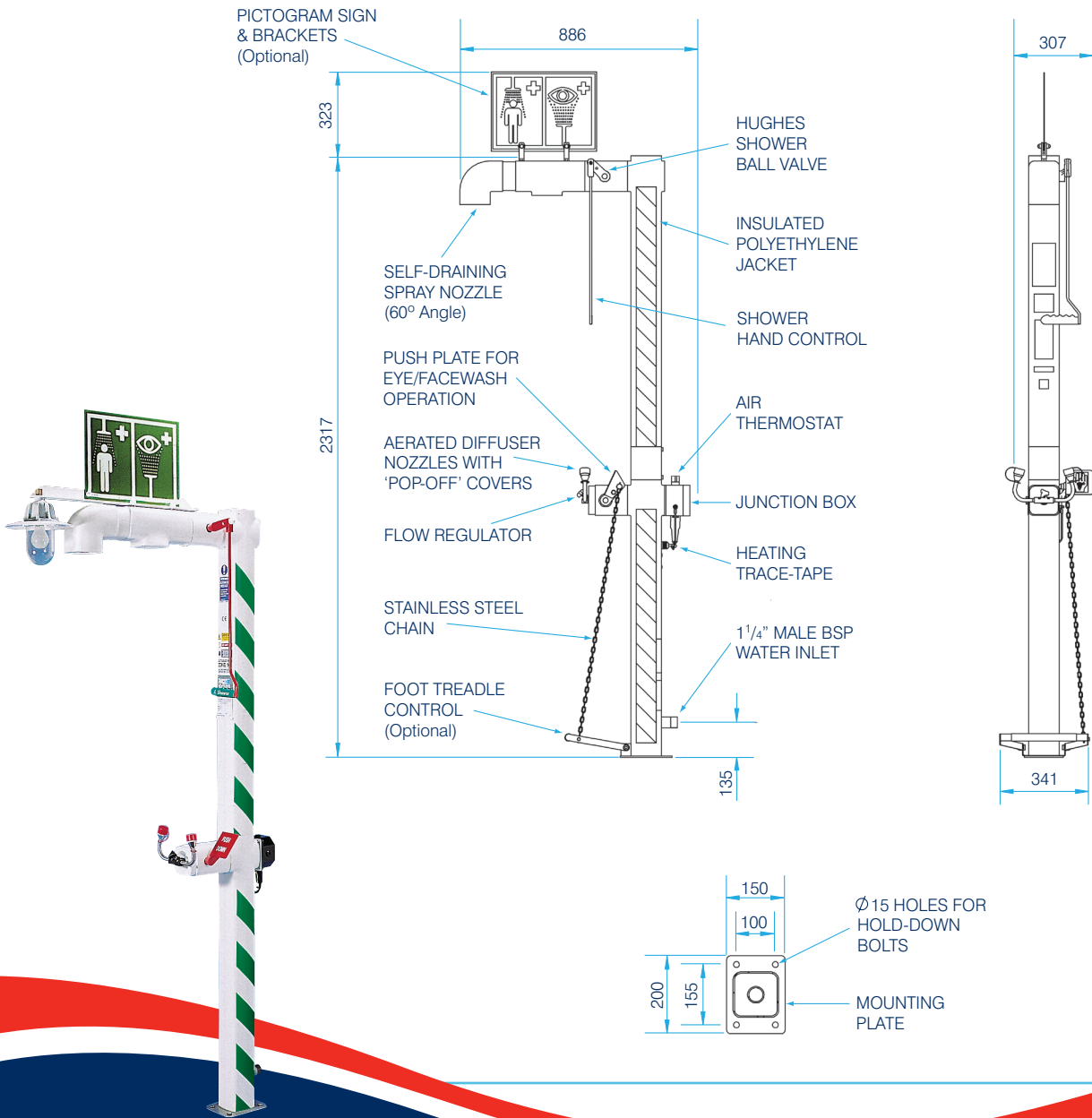
Optional Fittings	Shower/Eye wash Sign	Well Glass Light with Mounting Brackets	Sign Box and Lighting	Treadle Foot Control	Shower Proximity Switch	Eye/Facewash Proximity Switch	Flow Switch	Audible/Visual Alarm	Audible Alarm	Visual Alarm	Brass Pressure Reducing Valve	Scald Protection Valve	Freeze Protection Valve	Inlet Flange	Heated Underground Extention Pipe	Cubicle
-------------------	----------------------	---	-----------------------	----------------------	-------------------------	-------------------------------	-------------	----------------------	---------------	--------------	-------------------------------	------------------------	-------------------------	--------------	-----------------------------------	---------

EXP-EH-5G/34G	●	●	●	●	●	●	●	●	●	●	●	●	●	●	●	●
EXP-EH-5GS/34GS	●	●	●	●	●	●	●	●	●	●	●	●	●	●	●	●
EXP-AH-5G/34G	●	●	●	●	●	●	●	●	●	●	●	●	●	●	●	●
EXP-EJ-5G/34G	●	●	●	●	●	●	●	●	●	●	●	●	●	●	●	●



Outdoor Heated Emergency Safety Showers
EXP-EH-5G/34G
 EXP-AH-5G/34G, EXP-EJ-5G/34G

HUGHES G.A. DRAWING



HUGHES SAFETY SHOWERS LTD
 Whitefield Road, Bredbury, Stockport, Cheshire, SK6 2SS England, UK.
T: +44 (0)161 430 6618
 E: info@hughes-safety-showers.co.uk F: +44 (0)161 430 7928

www.hughes-safety-showers.co.uk

Registered No. 0939240. VAT Registration No. 918 5005 32. Hughes Safety Showers Ltd is a wholly owned subsidiary of the JD Hughes Group PLC.

